

SNAPSHOT OF FAMILY VIOLENCE IN CANADA

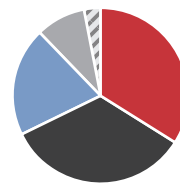
FAMILY VIOLENCE includes intimate partner violence, child maltreatment, and elder abuse. It can be physical, emotional, sexual and financial abuse, as well as neglect

 **FAMILY VIOLENCE** accounted for approximately **25%** of all **police-reported violent crime** in Canada in 2011

CHILD MALTREATMENT

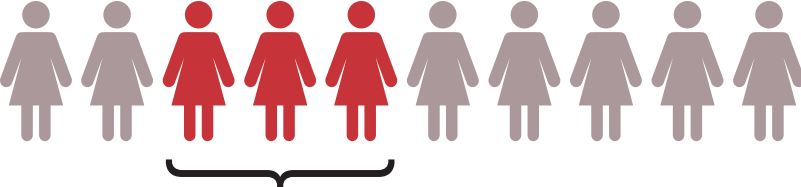
32% OF ADULTS IN CANADA REPORT HAVING EXPERIENCED SOME FORM OF MALTREATMENT AS A CHILD

TYPES OF CHILD MALTREATMENT:



■ exposure to intimate partner violence – **34%**
 ■ neglect – **34%**
 ■ physical abuse – **20%**
 ■ emotional abuse – **9%**
 ■ sexual abuse – **3%**

INTIMATE PARTNER VIOLENCE


IN CANADA, 30% OF WOMEN experience intimate partner violence in their lifetime

ABORIGINAL WOMEN ARE MORE THAN **TWO TIMES** AS LIKELY AS NON-ABORIGINAL WOMEN TO EXPERIENCE INTIMATE PARTNER VIOLENCE

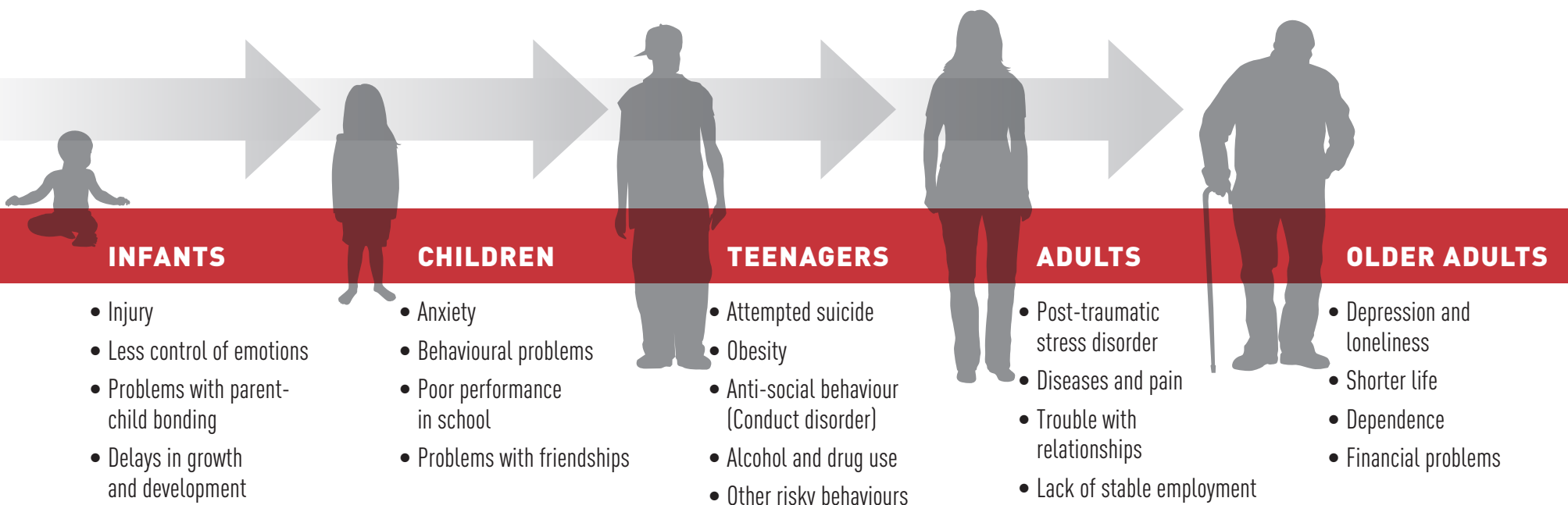
 **80%** OF INTIMATE PARTNER VIOLENCE IS AGAINST **WOMEN**

ELDER ABUSE

53% OF ABUSE OF OLDER ADULTS IS BY **FAMILY MEMBERS OR ACQUAINTANCES**

60% OF INCIDENTS OF ELDER ABUSE ARE **PHYSICAL ASSAULTS**

FAMILY VIOLENCE CAN CAUSE A NUMBER OF SERIOUS HEALTH AND SOCIAL PROBLEMS ACROSS THE LIFESPAN



Spousal violence alone costs Canadian society **\$7.4 billion/year**