



CIHR IRSC

Canadian Institutes of Health Research Instituts de recherche
en santé du Canada

Discoveries for life / Découvertes pour la vie

Patient-Oriented Research at CIHR – Past, Present, and Future

Dr. Tammy J. Clifford

Vice-President, Research – Learning Health Systems

Presentation to the SPOR Evidence Alliance AGM

June 2022



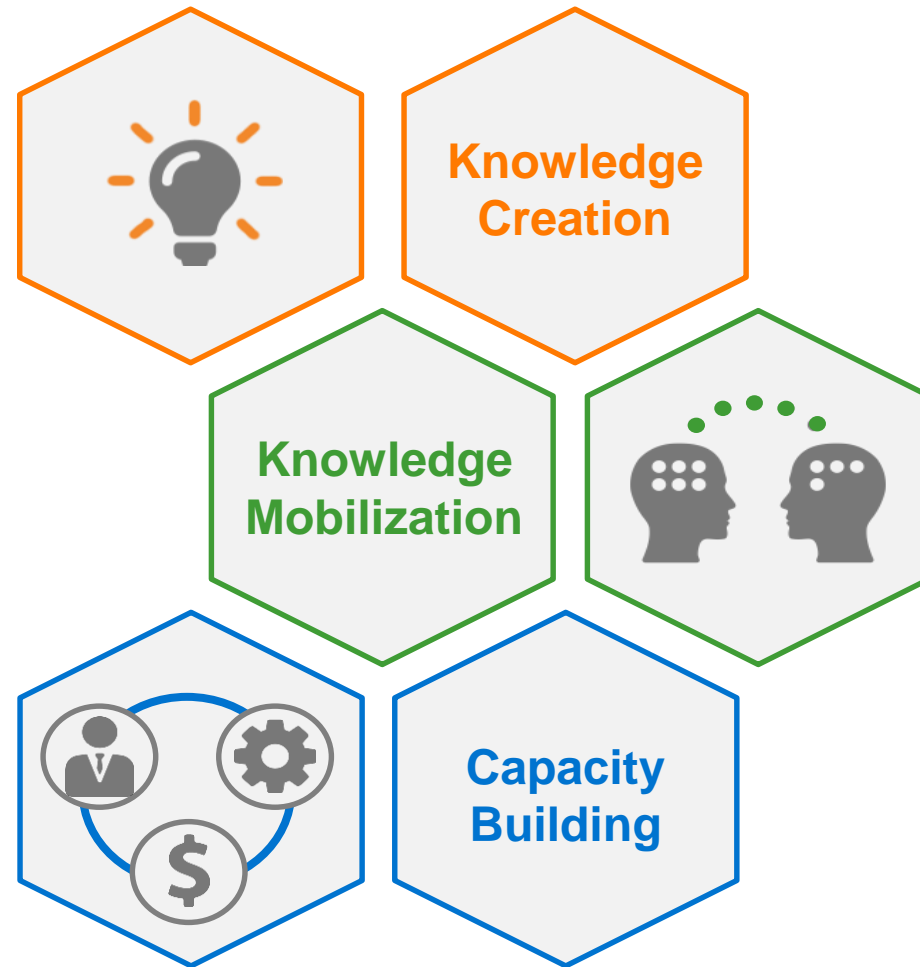
Canadian Institutes
of Health Research

Instituts de recherche
en santé du Canada

Canada

CIHR Mandate

Canada's federal health research investment agency



“Health research must be better harnessed to increase both the quality and affordability of care.”

- Canadian research excellence is recognized globally; the country ranked amongst the top in the world on scientific impact of its health research
- Yet, evidence showed that 50% of patients do not get treatments of proven effectiveness and up to 25% get care that is not needed or potentially harmful
- Incentives for health research are not focused on these problems – bringing research and decision-makers/patients together requires a change in culture and approach (push-pull innovation model)

The Need for a National Strategy

Many factors and pressures:

- Global movement toward evidence-informed health care;
- Increasing impatience with the pace at which scientific discovery results in new products/interventions;
- Gaps in evidence make it difficult to establish appropriate care guidelines;
- Financial imperative to allocate resources to the most effective and cost-effective interventions.

Official Launch of the Strategy



“By putting patients first, we are making sure that research will have a greater impact on treatments and services provided in clinics, hospitals and doctors' offices throughout Canada, better integration of research evidence and clinical practice means improved health outcomes and a better health-care system in Canada.”



Honourable Leona Aglukkaq, Minister of Health
Canadian Medical Association Annual Meeting
St. John's, Newfoundland
August 22, 2011

SPOR Elements

Strategy for Patient-Oriented Research



Support for People and Patient-Oriented Research and Trials (SUPPORT) Units



SPOR Networks



Capacity Development



Clinical Trials



Patient Engagement



Enabling Functions

The SPOR Journey

Legend:



*Funding competitions launched



CIHR | Discoveries for life
IRSC | Découvertes pour la vie

CIHR Strategic Plan 2021–31: A Vision for a Healthier Future*

*To achieve the best health for all,
powered by outstanding research*

- Focuses on health equity, knowledge mobilization, and equity, diversity, and inclusion.
- Provides priority-setting direction for the next 10 years, while also allowing us to reprioritize and redirect resources on short notice to respond to emerging issues.



*<https://cihr-irsc.gc.ca/e/52331.html>

CIHR's Strategic Plan (2021-2031)

PRIORITY A

ADVANCE RESEARCH EXCELLENCE IN ALL ITS DIVERSITY



PRIORITY B

STRENGTHEN CANADIAN HEALTH RESEARCH CAPACITY



PRIORITY C

ACCELERATE THE SELF-DETERMINATION OF
INDIGENOUS PEOPLES IN HEALTH RESEARCH



PRIORITY D

PURSUE HEALTH EQUITY THROUGH RESEARCH



PRIORITY E

INTEGRATE EVIDENCE IN HEALTH DECISIONS

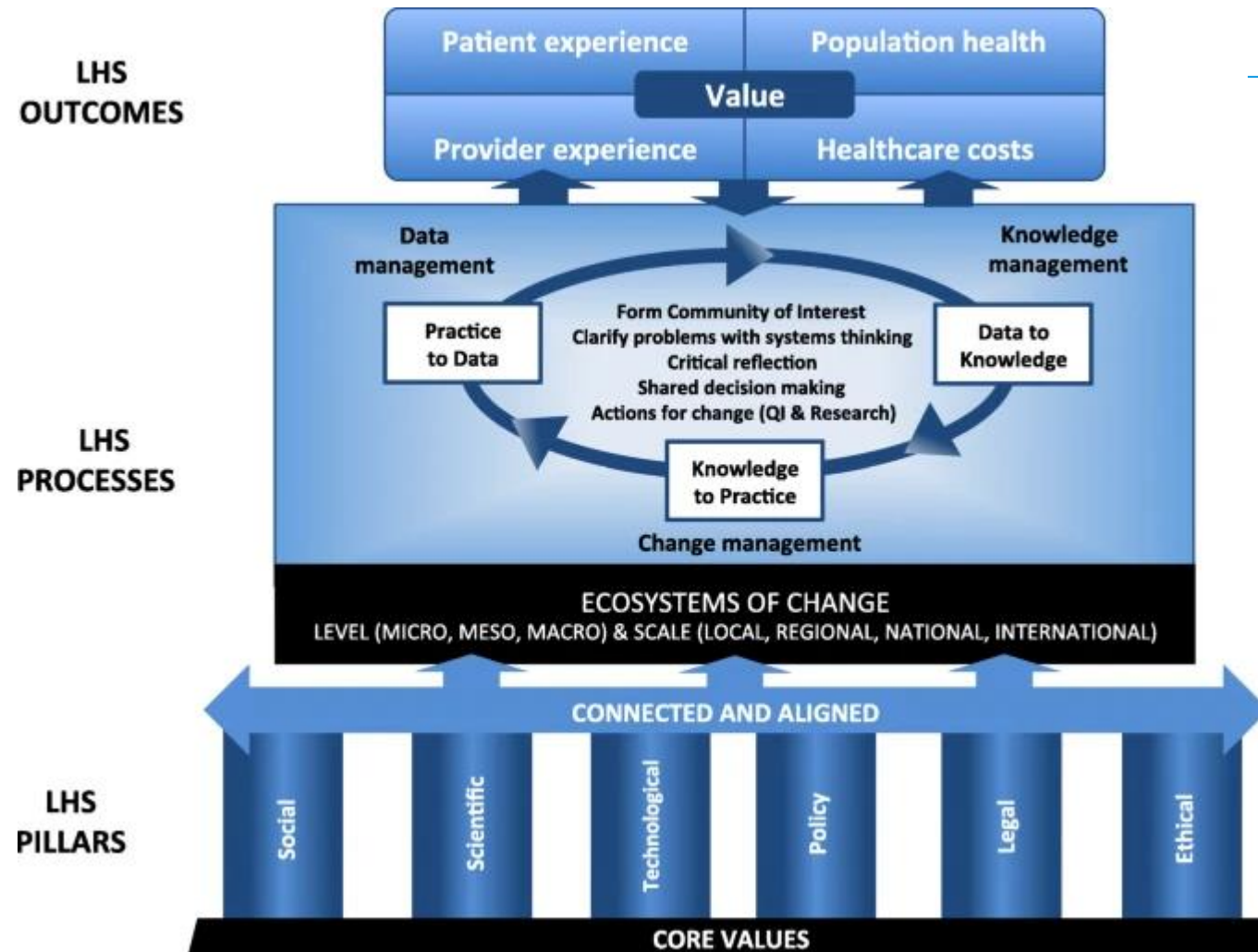


SERVING CANADIANS:

OUR COMMITMENT TO ORGANIZATIONAL EXCELLENCE

A new portfolio: Learning Health Systems

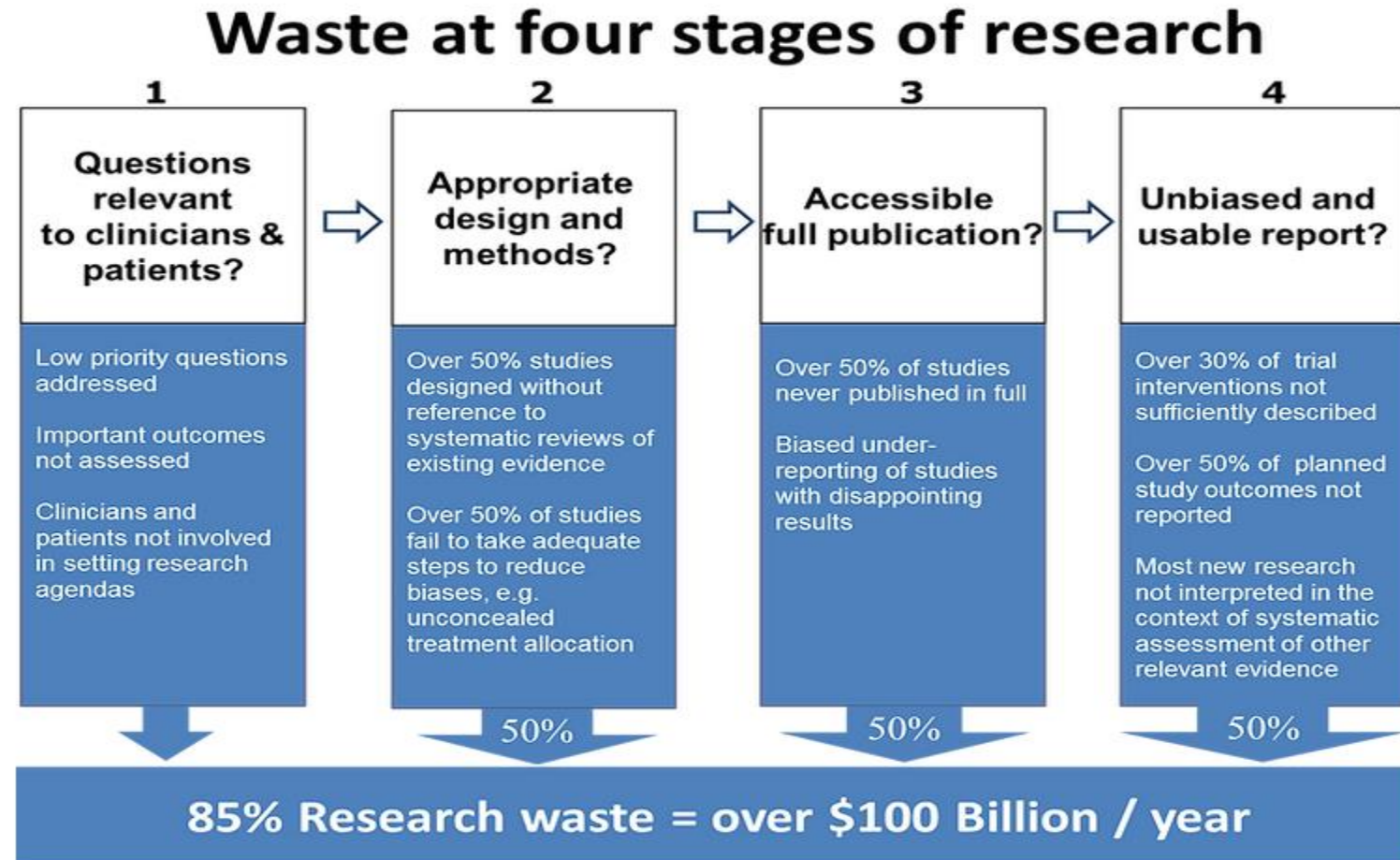
A conceptual LHS framework in the Canadian context



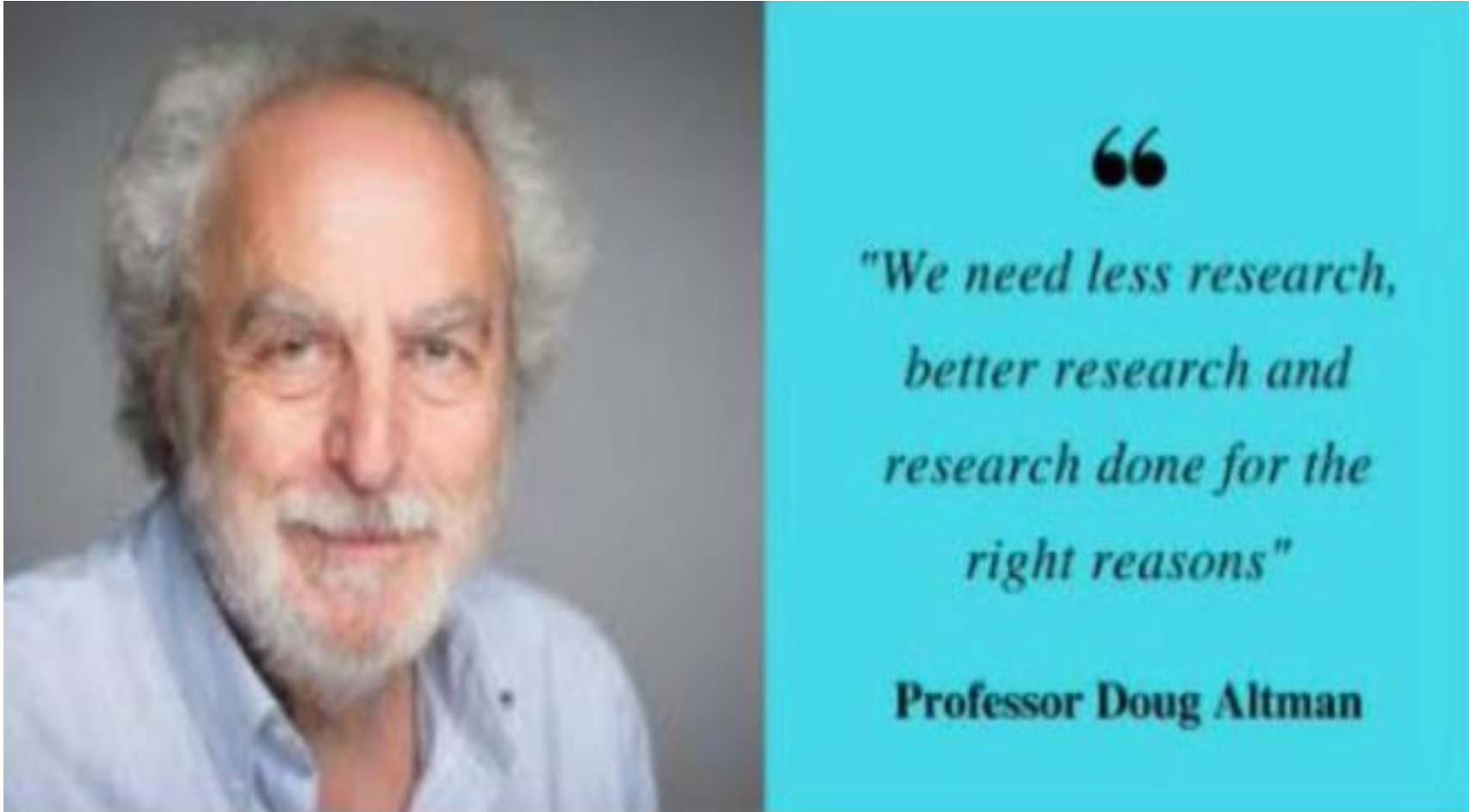
Learning Health Systems & Patient-Oriented Research – the why



Learning Health Systems & Patient-Oriented Research – the why



(Figure Stages of waste in the production and reporting of research evidence relevant to clinicians and patients; from [Chalmers & Glasziou, The Lancet 2009](#))



Learning Health Systems & Patient-Oriented Research – the why

Treweek et al. *Trials* (2022) 23:537
<https://doi.org/10.1186/s13063-022-06348-z>

Trials

METHODOLOGY

Open Access



Getting it wrong most of the time? Comparing trialists' choice of primary outcome with what patients and health professionals want

Shaun Treweek^{1*} , Viviane Miyakoda², Dylan Burke³ and Frances Shiely^{3,4}

Learning Health Systems & Patient-Oriented Research – the why

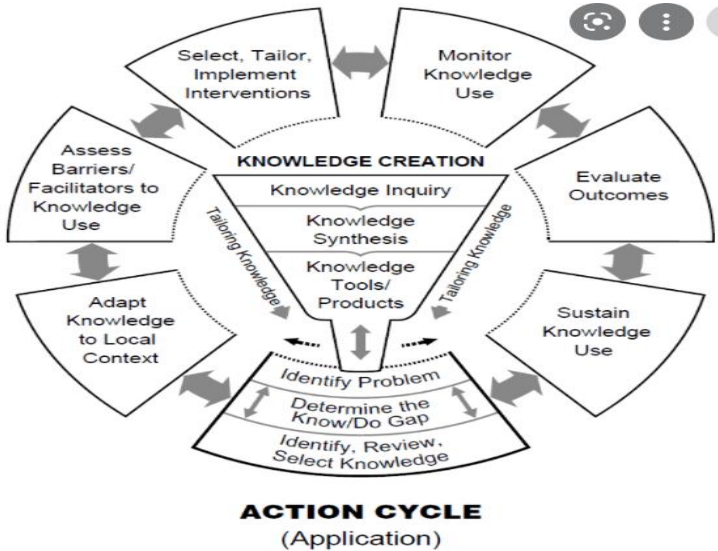


What is DORA?

The Declaration on Research Assessment (DORA) recognizes the need to improve the ways in which researchers and the outputs of scholarly research are evaluated.

<https://sfdora.org/>

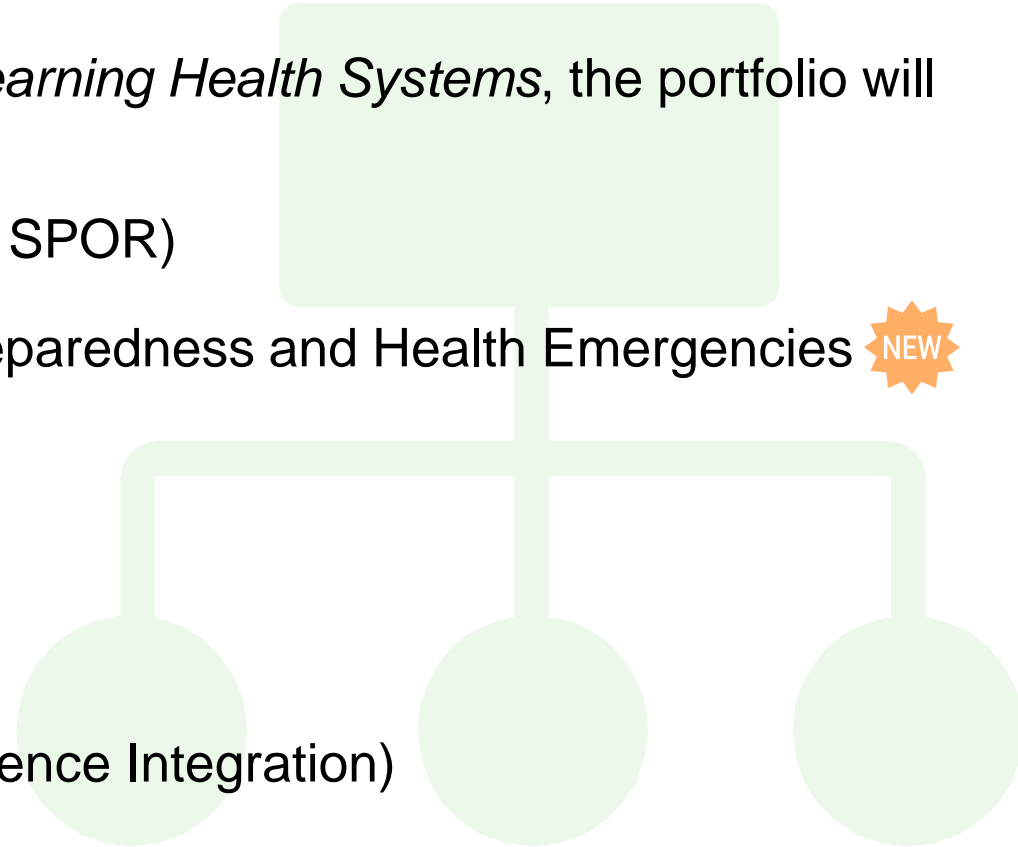
Supporting Learning Health Systems & Patient-Oriented Research



CIHR's Learning Health Systems Portfolio

Structure

- Led by the *Vice President Research – Learning Health Systems*, the portfolio will support the following functions:
 - Patient-Oriented Research (including SPOR)
 - Centre for Research in Pandemic Preparedness and Health Emergencies 
 - Clinical Trials Fund 
 - Equity Strategy (EDI)
 - Science Policy
 - Knowledge Mobilization (incl Evidence Integration)
 - Research Excellence and Ethics
 - Training & Capacity Development



CIHR's Strategic Plan (2021-2031)

PRIORITY A

ADVANCE RESEARCH EXCELLENCE IN ALL ITS DIVERSITY



PRIORITY B

STRENGTHEN CANADIAN HEALTH RESEARCH CAPACITY



PRIORITY C

ACCELERATE THE SELF-DETERMINATION OF
INDIGENOUS PEOPLES IN HEALTH RESEARCH



PRIORITY D

PURSUE HEALTH EQUITY THROUGH RESEARCH



PRIORITY E

INTEGRATE EVIDENCE IN HEALTH DECISIONS



SERVING CANADIANS:

OUR COMMITMENT TO ORGANIZATIONAL EXCELLENCE

SPOR (& POR): Foundational to Implementing CIHR's Strategic Plan

PRIORITY A ADVANCE RESEARCH EXCELLENCE IN ALL ITS DIVERSITY

- Championing a more inclusive concept of research excellence, by recognizing patients, the public, providers, decision-makers, as active collaborators in research.
- Enhancing national collaboration.

PRIORITY B STRENGTHEN CANADIAN HEALTH RESEARCH CAPACITY

- POR Training and Awards enhance training and career support.

PRIORITY C ACCELERATE THE SELF-DETERMINATION OF INDIGENOUS PEOPLES IN HEALTH RESEARCH

- Removing barriers to Indigenous-led and Indigenous Health Research.
- Opportunities to collaborate and support the work of IIPH.

PRIORITY D PURSUE HEALTH EQUITY THROUGH RESEARCH

- Reduces health inequities through research by involving patients as partners throughout the research process.

PRIORITY E INTEGRATE EVIDENCE IN HEALTH DECISIONS

- Advancing the science of Knowledge Mobilization.
- Maximizing results for Canadians.
- Strengthening Canada's health systems through innovation (e.g. Learning Health Systems).

Strategy for Patient-Oriented Research

SPOR

Putting Patients First



SPOR Impacts

- Anecdotal evidence: there is a cultural shift to POR seen in P/Ts.
- Expectation from patients for a POR approach (e.g., COVID rapid response, CTF).
- Indigenous engagement across SUPPORT Units (representation on governance bodies, NWT SUPPORT Unit implementing UNDRIP).
- Findings from SPOR's first evaluation:
 - Aligned with international trends towards POR; complements POR activities undertaken by the P/Ts
 - The right elements and activities to address areas in need of support for POR and evidence-informed health care
 - National governance mechanisms – key success factor is the “let’s discuss together” approach.
 - Stakeholder engagement –“exceptional” and successful at developing relationships.

SPOR Impacts - COVID-19 Response

- SPOR Evidence Alliance has been key resource in supporting evidence-informed decision making
- Collaboration with COVID-END helped coordinate and reduce duplication of COVID related research, knowledge synthesis and other activities



The screenshot shows the CIHR website header with the text "Canadian Institutes of Health Research" and the "Canada" logo. A navigation bar includes links for Funding, Institutes, College of Reviewers, Initiatives, Collaboration, Priority areas, and Discoveries for life. A search bar is located on the right. Below the navigation bar, a breadcrumb trail reads "Home → News → COVID-19". The main content area features a large orange banner with the text "Coronavirus disease (COVID-19)" and an image of a person in a white protective suit and blue gloves. Below the banner, the heading "COVID-19 Resources: Evidence-informed decision making" is displayed. A text box below the heading states: "Looking for up-to-date and high-quality scientific evidence on COVID-19? Submit a query to:" followed by two bullet points: "• [The SPOR Evidence Alliance](#) (focused on knowledge synthesis, guidelines development, and knowledge translation)" and "• [The Drug Safety and Effectiveness Network \(DSEN\)](#) (focused on the safety and effectiveness of biologics and pharmaceutical drugs used in the real-world)".

SPOR – What's new?

Strategy for Patient-Oriented Research

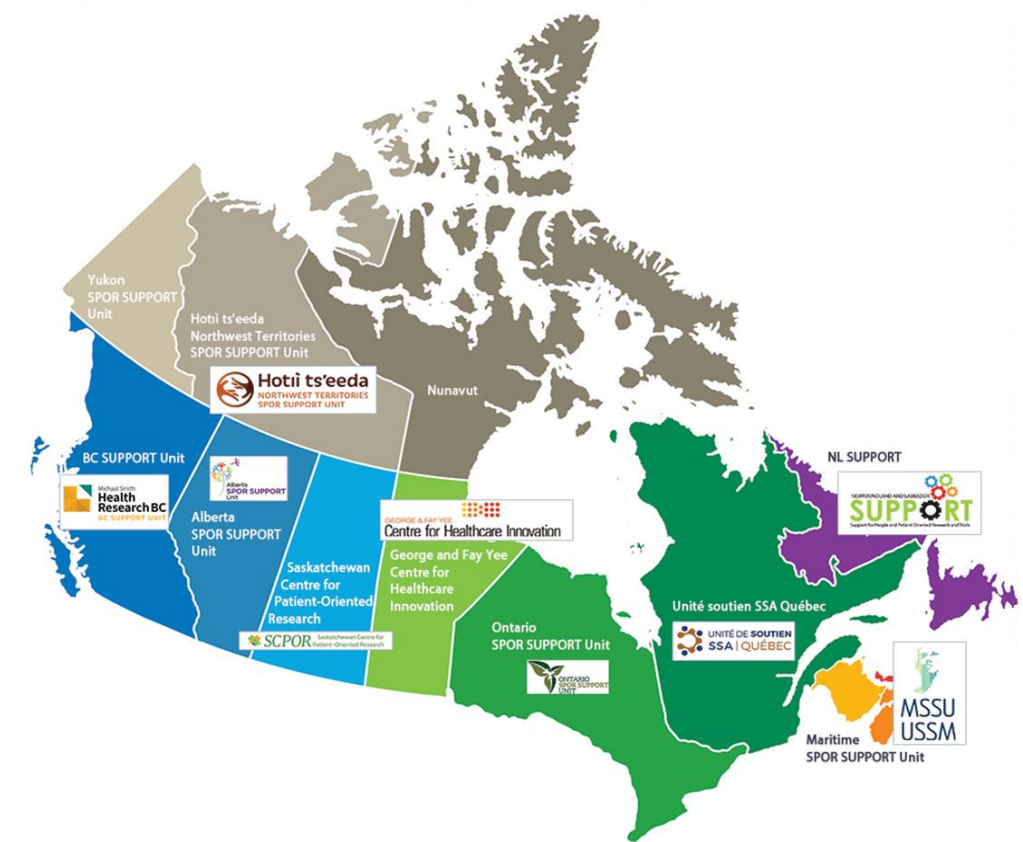


Dr. Amy Lang

- New Executive Director, Patient-Oriented Research
 - Dr. Amy Lang (Twitter: @Amy_Lang)
- Responsible for:
 - Canada's Strategy for Patient-Oriented Research
 - Embedding patient engagement and patient-oriented research across all CIHR activities, initiatives & programs.

SPOR – What's new?

- **SPOR Networks:** Seven [SPOR Networks](#) funded in Phase 1 (2014)
 - Two new SPOR Networks funded as part of Phase II (April 1, 2022)
 1. *Knowledge Mobilization and Implementation Science (KMIS) grants*
 2. *SPOR Primary Care Network grant*
 - Integrated Youth Services NofN (IYS-Net)
 - Joint investment of SPOR, the Graham Boeckh Foundation and CIHR-INMHA
 - Multi-phased initiative to develop a pan-Canadian network of learning health systems focused on integrating mental health services
- **SPOR SUPPORT Units:** Nine of the ten SUPPORT Units were renewed and began Phase II funding in 2021 (April 1, 2022 for Saskatchewan).
 - New **Learning Health System** Component
- **SPOR National Training Entity:** Funded in March 2021 as a national training platform in POR.



SPOR – What's new?



Transforming Health with Integrated Care (THINC) – Implementation Science Teams

The THINC Implementation Science Team (IST) Grants funding opportunity focuses on improving our understanding of how to implement, evaluate, adapt, and/or spread/scale evidence-informed integrated care policies and interventions.



Integrated Youth Services Network of Networks (IYS-Net)

ISY-Net is a phased initiative with the aim of creating a Canada-wide network of provincial and territorial learning health systems for Integrated Youth Services (IYS).



What's on the horizon for SPOR?



Second SPOR Evaluation (2016/17 – 2020/21)

- Part of CIHR's accountability requirements as a federal government agency (Treasury Board's Policy on Evaluation).
- Aims to inform program improvement and decision making related to SPOR's future direction, planning and sustainability.
- Will inform a refresh of the SPOR Strategy and governance
- To be completed by end of 2022.

What's on the horizon for SPOR?

SPOR Governance and Strategy Refresh

- Initial planning work to begin in 2022-23
- Will look to define a renewed approach that:
 - reflects evolving health systems, community and patient priorities,
 - builds on successes to date, and
 - will achieve significant progress toward achieving SPOR's vision.



The vision of SPOR is to demonstrably improve health outcomes and enhance patients' health care experience through integration of evidence at all levels in the health care system.

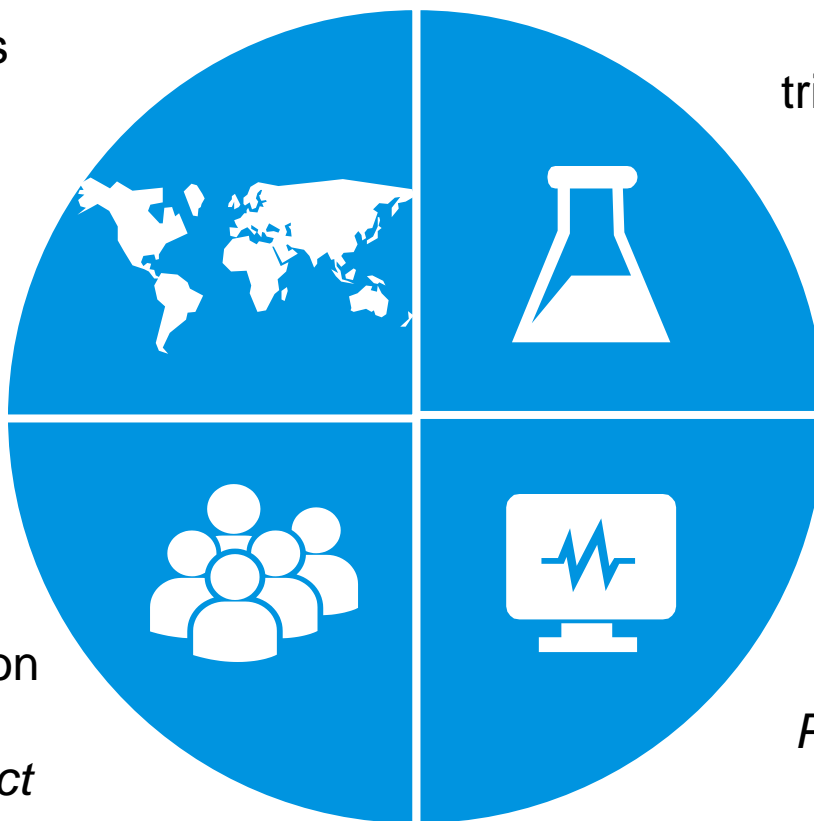
Opportunities for POR, Beyond SPOR

Centre for Research on Pandemic Preparedness and Health Emergencies

\$18.5M per year to grow Canada's capacity to research and mobilize knowledge to prevent, prepare for, respond to, and recover from existing and future pandemics and public health emergencies

Knowledge Mobilization

To ensure that CIHR's broad spectrum of knowledge mobilization initiatives fulfil its mandate in this area, as expressed in the *CIHR Act*



Clinical Trials Fund

\$250M initiative aims to support researchers across the country to conduct the full spectrum of clinical trials, including the development and testing of new drugs, treatments, and public health and health system interventions to prevent, detect, treat, or manage various diseases or medical conditions

Health Research and Health-Related Data

Continued collaboration on the *Pan-Canadian Health Data Strategy*

A renewed emphasis on EDI in Health Research

Understanding the gaps across the research ecosystem

Research Content and Practice



Lack of research on health issues affecting disadvantaged groups



Lack of EDI applied to research design, methods, analysis, interpretation and dissemination



Little knowledge or ability to assess EDI principles in research

Research Environment



Measures of success reinforce existing inequalities and hierarchies



Lack of underrepresented groups in leadership positions on research teams



Smaller proportion of grants awarded, with lower amounts of funding, to under-represented groups

Equity Strategy (EDI)

EDI in CIHR's Funding System

- Tri-Agency EDI Statement and Action Plan
- Official Languages & Minority Community Action Plan
- Equity Strategy
- Anti-Racism Action Plan (in development)
- Accessibility and Systemic Ableism Action Plan (in development)

EDI in CIHR's Workplace

- Corporate policies & processes



EDI in CIHR-Funded Research

- Sex & Gender Based Analysis in Research Action Plan
- Ongoing development of up-to-date EDI/GBA+ training, and resources

Informing CIHR's EDI Actions

- CIHR External Advisory Committee – Anti-Racism
- CIHR External Advisory Committee – Accessibility & Systemic Ableism
- CIHR Internal Advisory Committee on EDI in the Funding System
- CIHR Internal Advisory Committee on EDI in the CIHR's Workplace





CIHR IRSC

Canadian Institutes of
Health Research

Instituts de recherche
en santé du Canada

Discoveries for life / Découvertes pour la vie